



# The Tube Style Integrated Flowmeter

**Always there when you need it**



A female healthcare professional with dark hair pulled back, wearing teal scrubs over a grey long-sleeved shirt. She has a stethoscope around her neck and an ID badge on her chest. The ID badge features the St. Stephen's Hospital logo and the name 'Joni Mitchell'. She is smiling slightly and has her arms crossed. The background is a gradient from blue on the left to white on the right.

**Emergencies don't**

# stand around waiting for a flowmeter to be found.

Ohio Medical™ has found a flowmeter that won't be moved or lost. Introducing the new **Tube Style Integrated Flowmeter** which combines a tube style flowmeter and a medical gas outlet into one simple, compact design – helping improve patient safety and reduce replacement/repair costs. And, as an added bonus, the gas outlet offers an extra port – giving you the flexibility to attach another flowmeter, hose or ventilator. Now, you can do a whole lot more, in a lot less space. Rest assured you will always have a flowmeter when you and your patients need one most.



**The Tube Style Integrated Flowmeter. Always there when you need it.**

# ONE UNIQUE OUTLET. TWO RELIABLE PORTS.

And many more reasons you'll want the Integrated Flowmeter.



## REDUCE WORRY AND FRUSTRATION

### *Respiratory Therapists and Nurses:*

Stop searching for a flowmeter. With the Integrated Flowmeter, once it's installed, it will always be there when you need it.

## AVOID UNNECESSARY REPLACEMENT / REPAIR COSTS

### *Biomedical Engineers:*

The Tube Style Integrated Flowmeter can help you save time and money because it reduces the number of lost or damaged flowmeters you reorder and/or repair each year.

## UNIQUE PRODUCT OFFERING

### *Plumbing Engineers:*

Your clients want options. With the Tube Style Integrated Flowmeter, you can give them just that – because the flowmeter can be customized to their health care institutions' needs, all while saving space and improving patient safety.

## IMPROVE EFFICIENCY

### *Facilities and Maintenance:*

Stop moving the flowmeter from outlet to outlet, room to room, wearing out the outlets and causing them to leak. Because the Tube Style Integrated Flowmeter comes permanently affixed to an outlet, the back and forth of the flowmeter stops, and in turn, lowers maintenance costs. Now that's something everyone can appreciate.

## WANT MORE?

### *How about endless options:*

The Integrated Flowmeter comes equipped with an extra 50 PSI supply outlet, giving you the flexibility to deliver more solutions. Options are endless with the Integrated Flowmeter, you can attach a hose, an additional flowmeter, a standard humidifier and so much more!



**ENDLESS  
OPTIONS**

## PERMANENTLY AFFIXED TO THE WALL

It will always be there when you and your patients need it most, increasing patient safety and minimizing cross contamination.

### TUBE STYLE FLOWMETER

Same look and feel as the ones you're used to working with – only difference is that this one isn't going anywhere.

### FLOW INDICATOR

The flow ball in the tube serves as your indicator. Now you can easily tell when flow is being delivered.

### SUPPLY OUTLET

This extra auxiliary port gives you the ability to connect other options to the flowmeter, helping you deliver more to your patients, in a lot less space.

### ADJUSTABLE KNOB

Easy to use, adjustable knob for flow control.

### SIMPLE, COMPACT DESIGN

It measures a mere 3.5 inches from the base to the knob – saving space and reducing clutter.

3.5"

## MORE FEATURES AND BENEFITS:

### FLOW RATE OPTIONS

Ranges available for Oxygen:

0-200 CCM, 0-1 LPM, 0-3.5 LPM, 0-8 LPM and 0-15 LPM

*(0-0.0071 SCFM, 0-0.0353 SCFM, 0-0.1236 SCFM, 0-0.2825 SCFM and 0-0.5297 SCFM)*

Ranges available for Medical Air:

0-15 LPM *(0-0.5297 SCFM)*

### WARRANTY

The Integrated Flowmeter comes with a 5 year warranty.

*(0-200 CCM & 0-1 LPM models carry a 1 year warranty on the flowmeter portion)*

### EASY-TO-READ LABELING

Color coded labeling on the outlet makes it easy to quickly distinguish between Oxygen and Medical Air.

### ISO OPTIONS AVAILABLE

The Integrated Flowmeter is available in ISO color coding for both Medical Air and Oxygen with DISS, Chemetron, and Ohmeda configuration options.



Chemetron Coupler  
(Oxygen)



DISS Male Fitting  
(Oxygen)



Ohmeda Coupler  
(Oxygen)



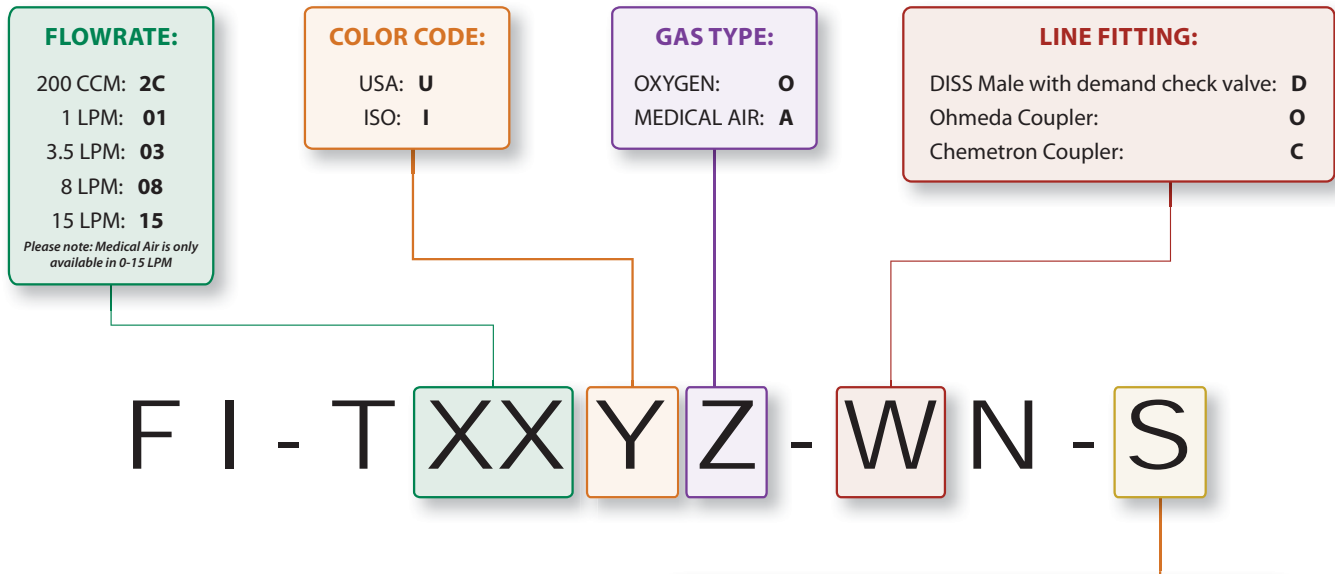
DISS Male Fitting  
(Medical Air)



## CONFIGURATION OPTIONS

Available in different flowrates, gas types and three different styles of connectors – the Integrated Flowmeter is retrofit capable and fits with over 15 different outlet types. There are over 50 different possible configurations.

# Integrated Flowmeter Configurator:



FI-T15UO-ON-E

**OUTLET COMPATIBILITY:**

Diamond 1*:	<b>A</b>
Diamond 2 & 3	
Beacon Madaes Diamond Care*:	<b>B</b>
Ohio Medical™	
Amico	
Beacon Series B	
Gentec	
Oxequip/Medstar Series #7 or 5/8-24*:	<b>E</b>
Puritan Bennett Series 73*	
Puritan Bennett Series "A"*	
Puritan Bennett Litharge*	
NCG/Chemetron Series 500, 560*	
Oxequip/Medstar Smooth Bore or 5/8-27*:	<b>F</b>
NCG/Chemetron Series 148, 400, 460*:	<b>G</b>
Tri-Tech/Ohmeda:	<b>T</b>

\* Requires a Retrofit Kit | ♦ For wall mount version only

Do you need a need a back-body to go with your integrated flowmeter? Order them together

261XXX-X-TXX

**Connection Style**

DISS:	000
Ohmeda:	010
Chemetron:	020

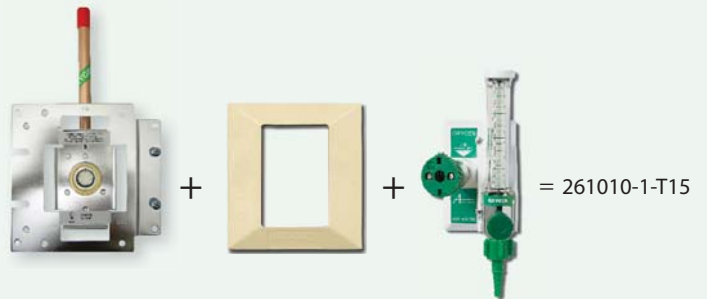
**Gas / Outlet Type**

Oxy / Wall:	1
Air / Wall:	13
Oxy / Console:	2
Air / Console:	14

**Flowrate**

200 CCM:	2C
1 LPM:	01
3.5 LPM:	03
8 LPM:	08
15 LPM:	15

*Great for new construction!*





## Yes, it's still there. Where it belongs.

### When patients need it most.

Feel confident knowing you have a flowmeter you can always count on. Ohio Medical's Integrated Flowmeter is permanently affixed to a gas outlet, so it can't be moved or lost. Now you and your patients can breathe easier.

Visit [wefoundyourflowmeter.com](http://wefoundyourflowmeter.com) for more information on how to increase safety, and your own peace of mind.

**The Integrated Flowmeter.**  
Always there when you need it.



[ohiomedical.com](http://ohiomedical.com) | 1-866-462-6839 | [amvex.com](http://amvex.com)



## One unique outlet. Two reliable ports.

### Endless solutions.

Permanently affixed to a gas outlet, Ohio Medical's versatile Integrated Flowmeter comes with a flowmeter already attached, making it readily available—always. As an added bonus, the outlet also comes equipped with an auxiliary port, offering you the flexibility to deliver the solutions you and your patients need.

Go to [wefoundyourflowmeter.com](http://wefoundyourflowmeter.com) to discover how you can do more, in less space.

**The Integrated Flowmeter.**  
Always there when you need it.



[ohiomedical.com](http://ohiomedical.com) | 1-866-462-6839 | [amvex.com](http://amvex.com)



## Won't be moved. Won't be reordered.

### And that saves you money.

Some hospitals reorder as many as 20% of their flowmeters annually because they are lost or damaged.\* Permanently affixed to a gas outlet, Ohio Medical's Integrated Flowmeter helps to reduce replacement and repair costs, while saving you time and increasing patient safety.

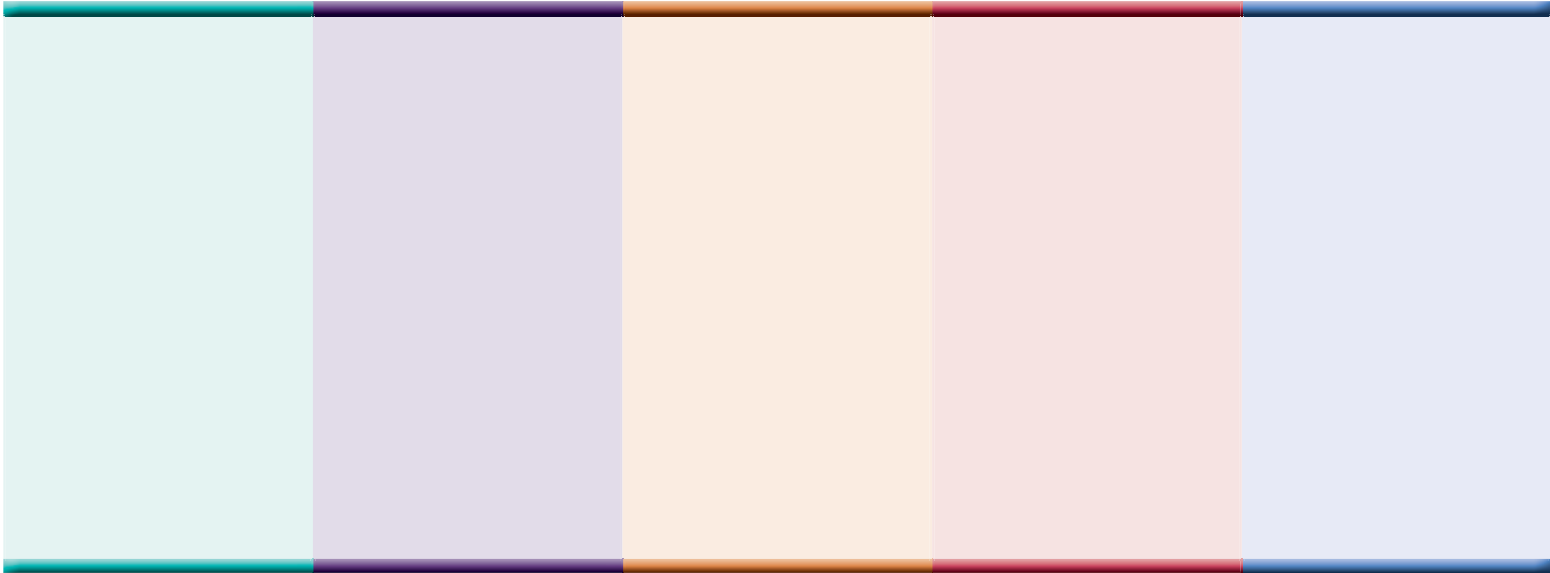
Log on to [wefoundyourflowmeter.com](http://wefoundyourflowmeter.com) for more information and get back to doing what you do best—helping patients.

**The Integrated Flowmeter.**  
Always there when you need it.



[ohiomedical.com](http://ohiomedical.com) | 1-866-462-6839 | [amvex.com](http://amvex.com)

\*Based on recent customer feedback



**Ohio Medical Head Office**

1111 Lakeside Drive  
Gurnee, IL 60031

**Ohio Medical Canada Office**

25B East Pearce Street  
Richmond Hill, ON L4B 2M9  
Canada

7/11  
MK-FIT-BRO